

# Masport Rosewood (PED) & Redcliff (LEG) Technical Specifications

(These instructions must be used in conjunction with the “General Installation Instructions” for Masport Fires and Flue Installation Specifications supplied by the flue manufacturer)

**Rosewood and Redcliff burner models have been tested and complies to following standards & tests:**

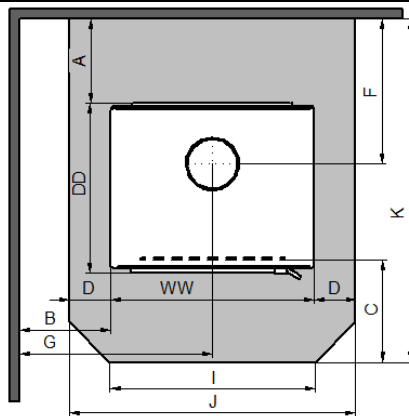
**Emission and Efficiency Test Standards** - AS/NZS 4012:2014 and AS/NZS 4013:2014.

**Wood burner Safety Test Standard** - AS/NZS 2918:2018

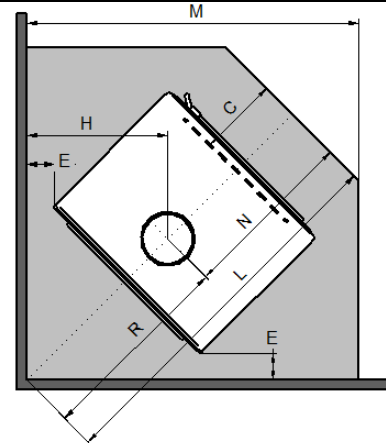
<b>Output suitable for areas upto</b>	<b>Emissions g/kg</b>	<b>Efficiency %</b>
120 m <sup>2</sup>	0.9 g/kg	66 %
<b>Weight</b>	60 kg	
<b>Floor Protector Requirement:</b>	Ash Floor Protector	

**Clearances to Combustibles:**

**Parallel Installation**



**Corner Installation**



Flue System	Flomet Universal Flue Kit with Decromesh and 3-Sided x 900mm Shield	Flomet Super Single Kit with 180°x900mm long Shield	Air Group Insulated kit with 3-sided x 900mm Shield
<b>A- Rear Panel to Rear Wall</b>	<b>100 mm</b>	<b>125 mm</b>	<b>125 mm</b>
<b>B- Top Front Corner to Side Wall</b>	<b>450 mm</b>	<b>375 mm</b>	<b>425 mm</b>
C- Glass to Floor Protector Front	300 mm	300 mm	300 mm
D- Floor Protector Side Edge	116 mm	116 mm	116 mm
<b>E- Top Rear Corner to Wall</b>	<b>250 mm</b>	<b>200 mm</b>	<b>225 mm</b>
F- Flue Centre to Rear Wall	290 mm	315 mm	315 mm
G- Flue Centre to Side Wall	697 mm	622 mm	672 mm
H- Flue Centre to Wall	551 mm	501 mm	526 mm
I- Floor Protector Front Edge	500 mm	500 mm	500 mm
<b>J- Floor Protector Width</b>	<b>725 mm</b>	<b>725 mm</b>	<b>725 mm</b>
<b>K- Floor Protector Depth</b>	<b>888 mm</b>	<b>913 mm</b>	<b>913 mm</b>
<b>L- Floor Protector Diagonal</b>	<b>1377 mm</b>	<b>1306 mm</b>	<b>1342 mm</b>
<b>M- Floor Protector Side</b>	<b>1124 mm</b>	<b>1074 mm</b>	<b>1099 mm</b>
N- Flue Centre to Floor Protector Front	598 mm	598 mm	598 mm
R- Flue Centre to Wall Corner	779 mm	708 mm	744 mm
WW- Overall Width of Fire		493 mm	
DD- Overall Depth of Fire		510 mm	
HH- Overall Height of Fire		640 mm	

The minimum clearances to combustibles may be reduced by shielding walls with an approved non-combustible material and appropriate clearance reduction factors given in Section 3 of AS/NZS 2918:2001

**Seismic Restrain** - In New Zealand and some part of Australia, it is required that the wood burner and floor protector are secured to prevent shifting in the event of an earthquake. This is best done by fastening the wood burner right through the protector to the floor, using 8mm DynaBolts or 8mm coach screws or equivalent toggle fasteners for wooden floors of appropriate lengths. Seismic holes are at the rear of the burner.